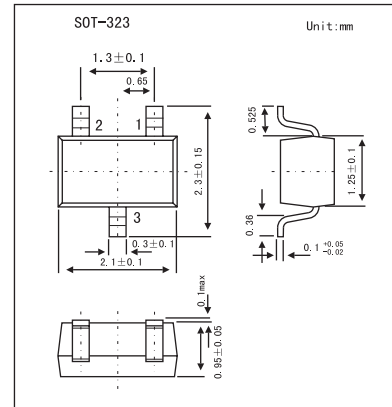
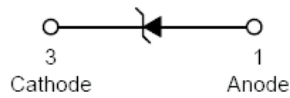


200mW Surface Mount Zener Diode BZX84C8V2W

Features

- Planar Die Construction
- 200mW Power Dissipation
- Ultra-Small Surface Mount Package



Absolute Maximum Ratings $T_a = 25^\circ\text{C}$

Parameter	Symbol	Rating	Unit
Forward Voltage @ $I_F = 10\text{mA}$	V_F	0.9	V
Power Dissipation	P_D	200	mW
Thermal Resistance, Junction to Ambient Air	$R_{\theta JA}$	625	K/W
Operating and Storage Temperature Range	T_J, T_{STG}	-65 to +150	$^\circ\text{C}$

Electrical Characteristics @ $T_A = 25^\circ\text{C}$ unless otherwise specified

Type Number	Zener Voltage Range *1			Maximum Zener Impedance*2			Maximum Reverse Current *1		Temperature Coefficient of Zener Voltage @ $I_{zT} = 5\text{mA}$ (mV/ $^\circ\text{C}$)		
	$V_z @ I_{zT}$			I_{zT}	$Z_{zT} @ I_{zT}$	$Z_{zK} @ I_{zK}$	I_R	@ V_R	Min	Max	
	Nom (V)	Min (V)	Max (V)	mA	Ω	mA	μA	V			
BZX84C8V2W	8.2	7.7	8.7	5	15	80	1	0.7	5	3.2	6.2

*1. Short duration test pulse used to minimize self-heating effect.

*2. $f = 1\text{kHz}$.

Marking

Marking	KR7
---------	-----

BZX84C8V2W

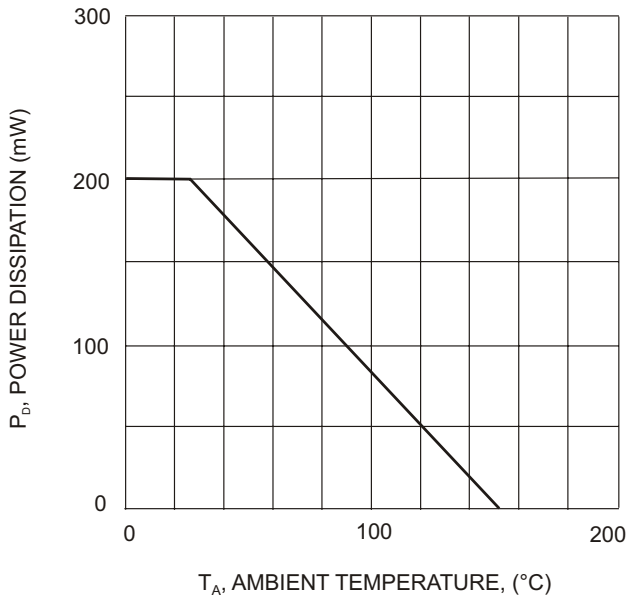


Fig. 1. Power Derating Curve

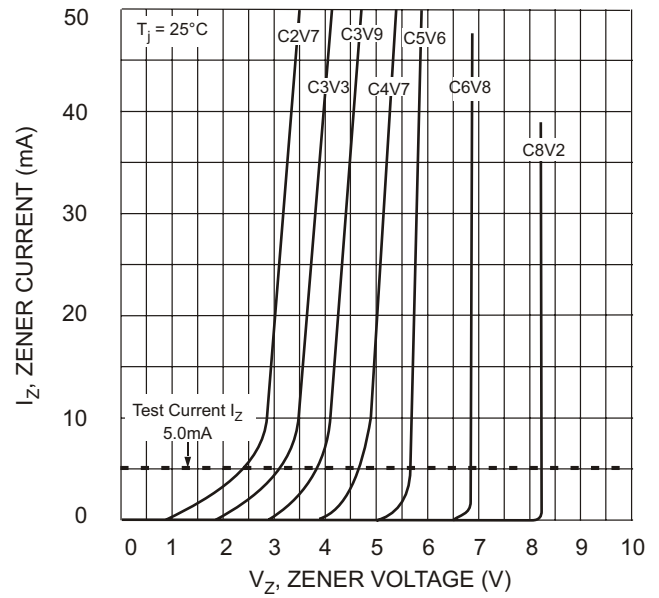


Fig. 2 Zener Breakdown Characteristics

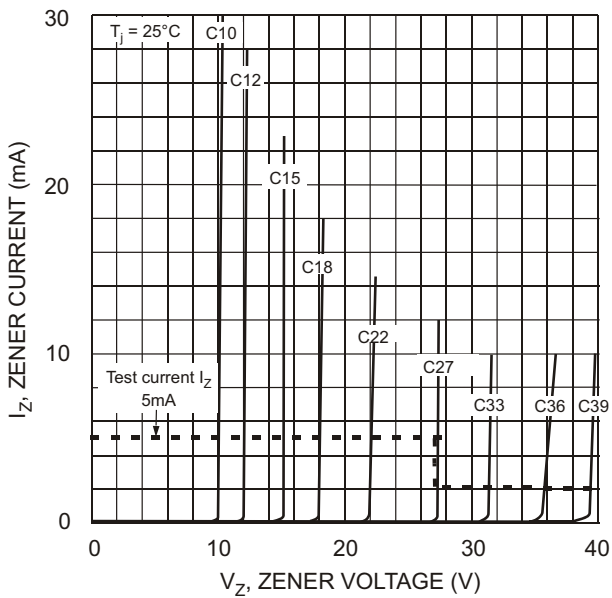


Fig. 3. Zener Breakdown Characteristics

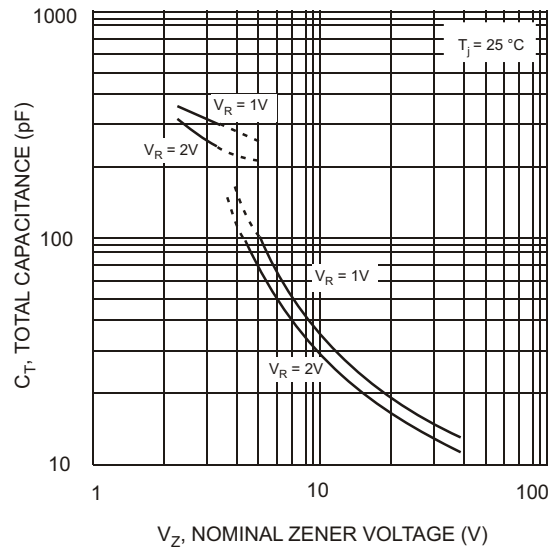


Fig. 4. Total Capacitance vs Nominal Zener Voltage